

Trail MAP

Maple Syrup Capital of Ontario

Whether you prefer to view some of Lanark County's most beautiful sights on foot, by bicycle, on ATV, or by horse, you'll likely find a trail to take you there. Trails and pathways crisscross this amazing region, offering access to historic villages and breathtaking natural vistas. Take a challenging hike or quietly seek out the best birdwatching haunts. Peruse some of the hundreds of kilometres of options!

BECKWITH

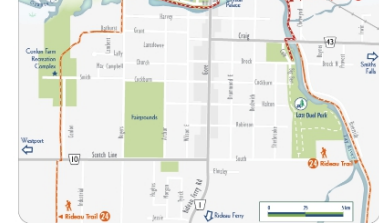
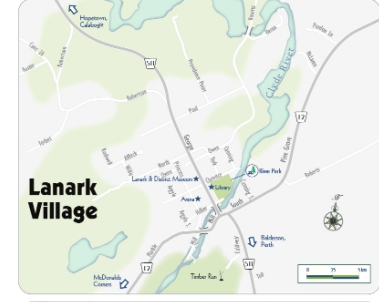
The Township of Beckwith is located on the most easterly side of Lanark County, set on the banks of beautiful Mississippi Lake. 1702 9th Line, Carleton Place, ON K7C 3P2, 613-257-1539 | www.twp.beckwith.on.ca

CARLETON PLACE

Carleton Place is conveniently located on the serene Mississippi River with beautiful streetscapes, scenic trails and picturesque waterfront. 175 Bridge St., Carleton Place, ON K7C 2V8, 613-257-6200 | www.carletonplace.ca



ONTARIO-CANADA
www.lanarkcountytourism.com



Legend

- Provincial Highway
- County Road
- Railway
- Rideau Canal Location
- Seven Wonders of Lanark County
- Village Information
- Hwy
- Trails
- Trail parking lot



Smiths Falls Heritage Trail

DRUMMOND/ NORTH ELSLEY

Bordered by the historic Rideau River Waterway to the south and the Mississippi River to the northwest, this charming area welcomes boaters from around the world. 310 Port Elmsley Road, Perth, ON K7H 3C7, 613-267-6500 | www.dnrtownship.ca

LANARK HIGHLANDS

As the name suggests, Lanark Highlands offers picturesque vistas of rolling hills and Canadian Shield topography, geology that creates the perfect terrain for maple syrup production. 75 George St., Lanark, ON K0G 1K0, 613-259-2398 | www.lanarkhighlands.ca

MISSISSIPPI MILLS

Recognized for its architectural and natural beauty, its true gift is the feeling of community that resonates throughout the villages of Almonte, Appleton, Blakeney, Clayton, Pakenham, and Ramsay. 3131 Old Perth Road, Box 400 Almonte, ON K0A 1A0, 613-256-2064 | www.mississippimills.ca

MONTAGUE

Set on the beautiful Rideau Canal, vast farmlands and heritage stone homesteads are the pride of this welcoming community. 6547 Roger Stevens Drive, Box 755, Smiths Falls, ON K7A 4W6, 613-283-7478 | www.mountagueltownship.ca

PERTH

Perth is one of Ontario's most attractive and well-known towns. The breathtaking historic homes and restored heritage buildings are a testament to the communities' efforts to honour the past in everyday life. 80 Gore Street East, Perth, ON K7H 1H9, 613-267-3311 | www.perth.ca



SMITHS FALLS

Located on the banks of the historic Rideau Canal waterway, residents enjoy acres of parkland relish in outdoor recreational activities along the watercourse, with natural wildlife, picnic areas, and maintained walking trails. 77 Beckwith Street North, Smiths Falls, ON K7A 2B8, 613-283-4124 | www.smithsfalls.ca

TAY VALLEY

A showcase of the Canadian Shield terrain of Lanark County, Tay Valley's rocky shoreline creates a spectacular destination for lakeside living. 217 Harper Road, Perth, ON K7H 3C6, 613-267-5353 | www.tayvalleytwp.ca

SEVEN WONDERS OF LANARK COUNTY

- 1. Free-Span Stone Bridge** was built by American missionaries and restored in 1982. This bridge is the only one of its kind on the North American continent.
- 2. Peter Celestine Church** is one of the oldest buildings in the township to retain its particular Gothic Revival interior. This incredible 150-year-old church is a testament to the community's dedication to its heritage.
- 3. The Mill of Kintail** showcases the renowned sculpted stone of Robert 'The Miller' McKenzie. This incredible 150-year-old conservation mill is owned and operated by Mississippi Valley Conservation.
- 4. Blueberry Mountain** features the highest peak in the area, offering a breathtaking view of the surrounding landscape. This natural preserve, owned and operated by the Clifford family, stands as the land's crown jewel.
- 5. The Shady Lady's Slipper Orchids** at Purdon Conservation Area are the highest in Canada - over 16,000 acres. This extraordinary colony of orchids bursts into bloom every year between mid-June and July.
- 6. The Shady Lady's Slipper** was a rare and beautiful orchid, a rare and beautiful orchid. It was a member of the Slipper family, a member of the Slipper family, a member of the Slipper family.
- 7. Beautiful Stewart Park** is a beautiful green space located in the town of Perth, Ontario. It is a beautiful green space located in the town of Perth, Ontario. It is a beautiful green space located in the town of Perth, Ontario.

PARKS/CONSERVATIONS AREAS/ NATURE RESERVES

1 Blueberry Mountain Trail
Experience high biodiversity at one of the Seven Wonders of Lanark County. Meadows, a cascading creek and century-old tree stands are part of the experience. For the weekend, there is a short, steep climb to the top of Blueberry Mountain. As a land trust conservation easement, maps are available from Mississippi Madewash Land Trust Conservancy. Open all seasons. 6 hours and parking available. 502 Hills of Peace Rd., Lanark Highlands. CONTACT THE TRAIL: <https://www.mmlt.ca/properties/blueberry-mountain-at-clifford>

2 High Lonsome Nature Reserve
8 km of marked trails over both flat and hilly terrain. Excellent spots to view wildlife, with meadow ponds, matured meadows and wetlands. 867 Carbine Road, Pakenham. CONTACT THE TRAIL: www.mmlt.ca/properties/high-lonsome-nature-reserve

3 Mill of Kintail Trails
Explore 4.7 km of walking trails at this historic site. The grounds, operated by Mississippi Valley Conservation, are open from 10:30 a.m. to 4:30 p.m. from Victoria Day to Thanksgiving. Well-marked trails take you to the mill and over the bridge. Museums, a gatehouse, workshops, a playground, parking and picnic area are onsite. Fees may be charged at 2854 Cur. & Burness, Almonte. CONTACT THE TRAIL: www.mvca.ca

4 Mississippi Lake National Wildlife Area / Migratory Bird Sanctuary
Mississippi Lake National Wildlife Area and the Migratory Bird Sanctuary are 3 km hiking trail through forest opening on Mississippi Lake near Ironville and are beautiful spots to connect with nature. Onsite facilities include a picnic area, boat launch, trail and washrooms. Fees for the bird sanctuary are seasonally restricted from September 15 to December 15. Access by direct access to Mississippi Lake via the Midstate Creek boat launch. Access by water or Drummond Concession 9A or by land from Drummond Concession 9A southwest of the parking lot and across from the lake access to a private residence at 1091 Drummond-Concession 9A. CONTACT THE TRAIL: www.canada.ca/en/environnement-et-changement-climatique/nature-diversite-et-parcs/locations/mississippi-lake.html

5 Beckwith Park Nature Trails
Take a walk through Beckwith Park and Plover's Village to a network of nature trails that meander through Goodwood Marsh, where you'll see abundant wetland species and a variety of birds. The trail goes from behind the arena at and joins the Beckwith Trail. Parking and washrooms are available at the complex. East of Carleton Place Off Hwy. 15 at 1319 9th Line, Beckwith. CONTACT THE TRAIL: www.twp.beckwith.on.ca

6 Murphys Point Provincial Park Trails
With more than 20 km of trails, you'll find scenic vistas, historic sites, abundant flora and fauna, varied Canadian Shield landscapes, and even one of the Seven Wonders of Lanark County the Silver Queen Mine. There are varying levels of difficulty, multiple access points, parking lot, and washroom facilities. Fees may apply. Located at 2245 Engrove Road, Tay Valley Township. CONTACT THE TRAIL: www.ontarioparks.ca

7 Perth Wildlife Reserve
Butterflies, birds and beautiful lookouts - see the outstanding features offered here. The Betty Wilson Nature Trail (2.5 km) leads to an observation tower at the stunning Tay Marsh, which teems with life. The Butterfly Trail (0.7 km) features plant species beloved by butterflies. Located at 100 Wildlife Road, south of Perth. There is parking, an outdoor centre and interpretive signs. CONTACT THE TRAIL: www.mvca.ca

8 Silver Lake Provincial Park - Marsh Trail
This easy 0.5 km nature trail crosses a marsh by boardwalks and leads to higher ground, where hikers can see the clear transition between wetland and upland forest, rich in flora and fauna. Washrooms, picnic tables, a playground, beach and parking are available. Fees may apply. Located on Highway 7 at 22728 CN-7, Madbury. CONTACT THE TRAIL: www.ontarioparks.com

9 Purdon Conservation Area Trails
One of the Seven Wonders of Lanark County, see North America's largest colony of Shady Lady's Slipper orchids on two trails: the 400-m Orchard Trail featuring a 400-m wheelchair-accessible boardwalk and the 1.3 km Ted Mosigan Highland Trail loop. Pic toilets and coaching parking. Blooming season is mid-June to mid-July. Trails open May 15 to Oct 15. Located at Concession Road 8, Lanark Highlands. CONTACT THE TRAIL: www.mvca.ca

MAPLE SUGAR BUSH AND TRAILS

- 6 Fulton's**
Open all year. 395 Sugar Bush Rd, Pakenham. Pass purchase required. fultons.ca
- 11 Thompsonville Maple**
Open all year. 780 Black Rock Lane, Clayton. thompsonvilleapple.com
- 12 Fortune Farms**
Open in season. 2442 Wolf Grove Rd., Almonte. fortunefarms.ca
- 14 Temple's Sugar Bush**
Open all year. 1700 Ferguson's Falls Road, Lanark. templesugarbush.ca
- 15 Wheeler's Maple Products**
Open all year. 1001 Highland Line, McDonalds Corners. wheelerapple.com

For More Information About...
Accommodations
Shopping & Dining | Attractions
Museums & Ancstry
Cycling | Trails
Canoe & Kayak | Birdwatching
www.lanarkcountytourism.ca
613-267-4200
For updates, join Lanark County Tourism on Facebook

COMMUNITY TRAILS

10 Almonte Riverwalk
Starting from the Almonte Old Town Hall, meander along the beautiful Mississippi River to a viewing platform overlooking the falls at the site of the old Victoria Wood Mill. This lovely little trail follows a boardwalk of bridges over the river, the site of an outdoor shopping and restaurants. Parking and washrooms are available at the Old Town Hall and Visitor Information Centre, 18 Bridge St., Almonte. CONTACT THE TRAIL: www.mississippimills.ca

11 Gemmill Metcalfe Park Trails
These 2- to 3-km trails start from behind the Almonte & District Community Centre and include several observation points. Birdwatchers can spot a variety of forest and waterfowl species along the river, including mallards, grebes and ducks. Washrooms and parking at the Almonte & District Community Centre, 152 Bridge St., Almonte. CONTACT THE TRAIL: www.mississippimills.ca

12 Rotary Centennial Trail
Running from just below the McNeely Avenue Bridge at Hwy. 29 in Carleton Place to the junction of Hillcrest Drive and River Road in Appleton, 7.4 km access to the lower reaches of the Rideau Canal provides the gorgeous Mississippi River. Watch for prevalent wildlife along the river and in the meadows. There are directional signs. It is open all hours. 370 William St., Carleton Place. CONTACT THE TRAIL: carletonplace.ca/trails

13 Riverside Trail
Enjoy the natural and architectural beauty of Carleton Place along this 0.5-km paved trail. Head out from the beach at Riverside Park. You'll find benches, picnic tables, a playground and a boat launch at the end of Lake Avenue West. Parking is available. 137 John St., Carleton Place. CONTACT THE TRAIL: carletonplace.ca/trails

14 O-Ke-Lee Park Trail
This short, flat covered 0.6 km trail meanders through a filled-in wetland area amid old willows and wooded ponds. Honeyeuckers, wild grapes and mountain ash berries attract many birds. Park along roadside. Picnic area and portable toilets are available at Centennial Park from May to October. 149 Street St., Carleton Place. CONTACT THE TRAIL: carletonplace.ca/trails

15 Mississippi Riverwalk
This 1.8 km, stone dust, wheelchair-accessible trail in Carleton Place begins on Princess Street and winds along the Mississippi River to Anthony Curro Park. Parking at the arena 73 Neelin St., Carleton Place. CONTACT THE TRAIL: carletonplace.ca/trails

16 Smiths Falls Heritage Trail
Experience the recreational opportunities in Smiths Falls along the heart of the Rideau Canal Waterway. A number of multi-use trails welcomes walkers, hikers, bicyclists, photographers, cyclists, snowmobilers, cross-country skiers, and snowmobiles. Take the Heritage trail and discover pedestrians alongside this historic, historic town, offering glimpses into the stories of Smiths Falls industry, culture and achievements. Restore with nature and walk through wooded scenery with Canoe Path. 30 Lombard St., Smiths Falls. CONTACT THE TRAIL: www.smithsfalls.ca

17 Tay River Towpath Trail
Immerse yourself in Perth's 200-year history along the interpretive panels along the stretch of the Rideau Trail. You'll find both natural and paved surfaces. Get started in Perth at the junction of Thorn Street and John Street or access with parking at the Tay Basin, 28 Drummond Street East, Perth. 99 Christie Lake Road, Perth. CONTACT THE TRAIL: www.perth.ca

18 Tay River Pathway
Located on the western outskirts of Perth behind Lanark Lodge and adjacent to the Lanark County Administration Building, this 1.5-km loop trail provides a newly accessible outdoor experience. It passes the Round Garden, which is a unique garden designed for all senses, as well as a white pine reforestation. It is suitable for wheelchairs and includes several park benches. No winter trail grooming. CONTACT THE TRAIL: www.lanarkcountys.ca

MUSEUMS

Carleton Place and Beckwith Heritage Museum
267 Edmund Street, Carleton Place
Discover the history of the communities of Carleton Place and Beckwith and learn stories that will engage and inspire you. Built in 1872, the building was the former Town Hall and lock-up, and later a public school. Adults and children alike will have fun exploring the exhibits. Guided tours available.

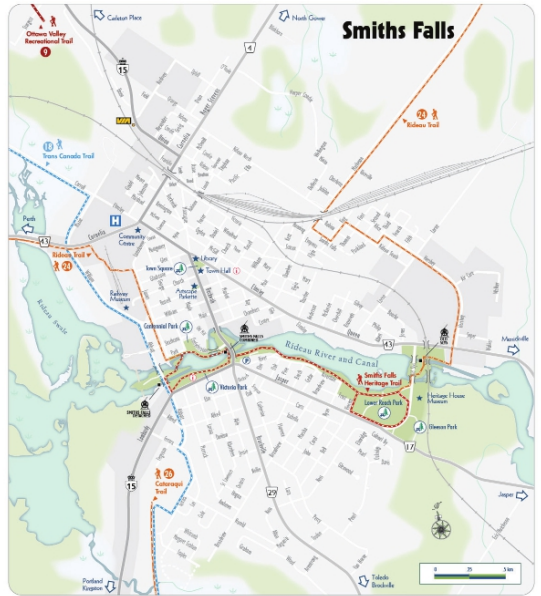
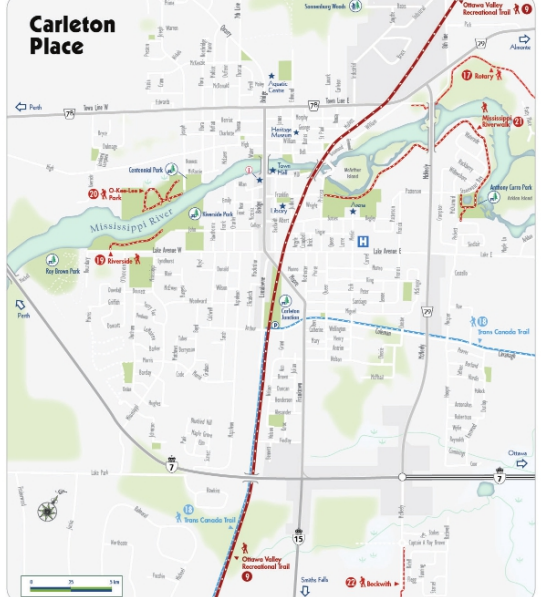
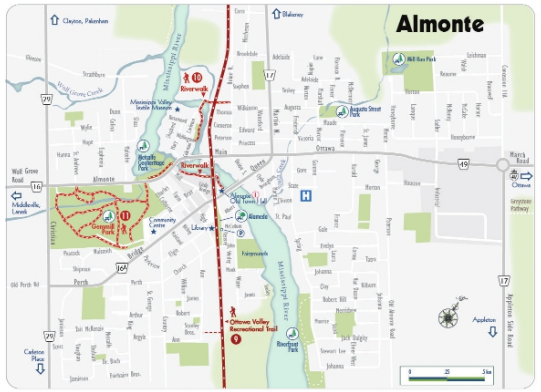
Heritage House Museum
11 Old Sly's Road, Smiths Falls
A visit to the Smiths Falls Heritage House includes a tour of 8 period rooms furnished to depict the lifestyle of the times. The Museum's unique mirror-image facades, outdoor brick bake oven and two-story brick preserve an atmosphere of the past in the once deserted house. Enjoy a picnic near our gardens or take a short stroll through parkland to the Rideau Canal and Old Sly's Lockation. Presented yearly round are changing exhibitions and art shows, a variety of educational events, workshops and school and children's programs. Also available are meetings space, rentals, gift shop and a Victorian setting for wedding ceremonies and photographs.

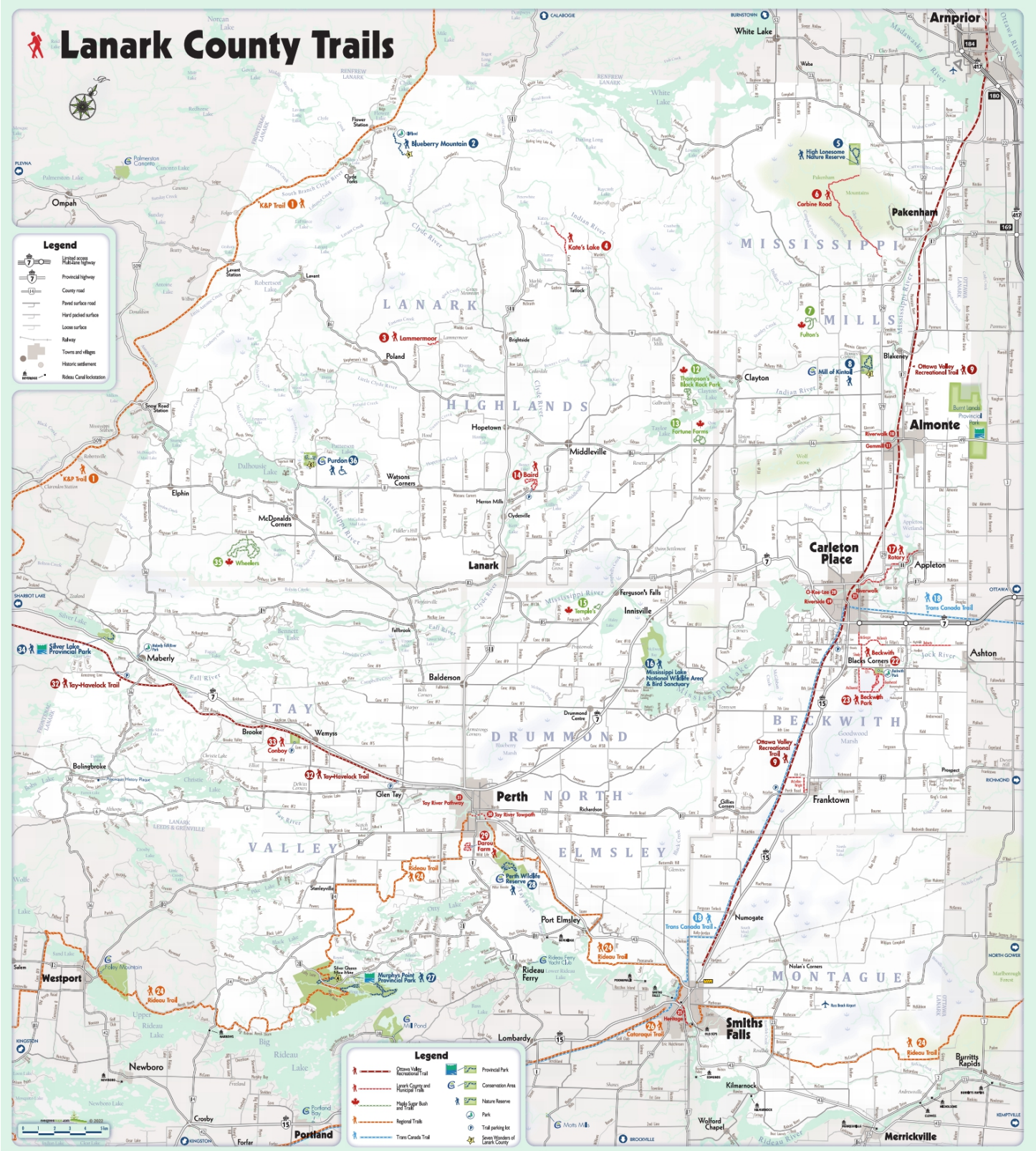
Lanark and District Museum
80 George St., Lanark
In the heart of Lanark County, the Lanark & District Museum offers a delightful array of activities, artifacts and memorabilia that celebrate the vibrant heritage of Lanark Highlands, and the former Drummond & Barham Townships. An exceptional array of family records, photographs and documents are available to explore. Heritage films are regularly available for viewing including heart wrenching footage of the 1959 Lanark Fire. The Museum also offers a small collection of local history books and souvenirs for sale.

Matheson House
11 Gore St. E., Perth
Leave the 21st century behind as you enter the world of the 1840s in the elegant Matheson House: home of the award-winning Perth Museum. This popular tourist attraction, located in downtown heritage Perth, is a National Historic Site.

Mississippi Valley Textile Museum
3 Rosamond Street, Mississippi Mills
Exhibitions range from early mill history and period mill equipment to cottage industry and modern fibre art exhibitions. This community museum combines traditional static and working displays with textile development processes with activities and events focusing on the region's heritage, culture and role of the textile industry in Canada. Guided tours available. Open year-round.

Railway Museum of Eastern Ontario
90 William Street West, Smiths Falls
RMEO is located on 10.3 acres in the heart of Smiths Falls. The station building, built in 1912 by the Canadian Northern Ontario Railway, is a National Historic Site. The museum is home to an extensive and unique collection, including rolling stock and inspection vehicles, over 10,000 artifacts, and archival and library materials. Open seasonally. Check hours at rmo.org.





1) K & P Trail

Journey along this historic railbed formerly the Kingston to Pembroke line, affectionately called the "Kick & Push". Mostly gravel, this multi-use, four-season trail offers 62-km for snowmobilers, four-wheelers, cyclists, horseback riders, hikers, and cross-country skiers. Revel in its gorgeous lakes and landscapes. The trailhead is near 13790 Hwy 509, with a parking area about 3 km south of Snow Road Station. Multiple access points.
CONTACT THE TRAIL: www.kp-trail.com

2) Rideau Trail

Avail hikers have no shortage of natural and cultural features to explore on this remarkable all-season, 367-km trail between Ottawa and Kingston. With a range of rugged Canadian Shield levels contrasted with quiet meadows and farmers' fields along stretches of roadway, this trail offers something for everyone. There are multiple access points. Parking at Carleton Farm or at the Crystal Palace in Perth, Lower Reach Park in Smiths Falls and Roadside Trail in Montague, 437 Roadside Road South, Smiths Falls.
CONTACT THE TRAIL: www.rideauentrail.org

3) Cataract Trail

This four-season multi-use gravel trail stretches for 102.2 km from Smiths Falls to Stratford as part of the Trans Canada and Rideau Trails. Revel in the history of the former railbed as you pass through or near numerous small communities along the way. Access from 123 Lombard Street, Smiths Falls.
CONTACT THE TRAIL: www.cataracttrail.com

4) Trans Canada Trail

This travel corridor is expected to be the longest trail of its kind in the world, covering more than 22,000 kilometers across Canada. In southern Ontario more than half of the trail has been built along abandoned rail lines. It is a multi-use trail featuring a wide-range terrain and landscapes that offer many natural and cultural attributes. This 105.7-km route on Lanark County roads connects the Cataract Trail, the Tay Havelock Trail and the new Ottawa Valley Recreational Trail (OVRT) to extend your scenic journey through the historic communities of Carleton Place, Almonte, Lanark, Perth and Smiths Falls. Multiple access points.
CONTACT THE TRAIL: www.tctrail.ca

5) Lammemoor

Travel to the end of Lammemoor Road in Lanark Highlands to find an easy 3-km hike along unimproved roadway through forests and wetlands. The trail ends on a high plateau of open agricultural fields and a local cemetery. Parking 1122 Lammemoor Road.
CONTACT THE TRAIL: www.lanarkhighlands.ca

6) Kate's Lake

This 1-km trail near Tatlock is on an unimproved roadway on Crown land. It takes you on an easy walk through pine forests on what was an old pioneer track. Trail ends at Kate's Lake, where you can view the water and have a picnic. 369 Concession Rd 9, Clayton, ON.
CONTACT THE TRAIL: www.lanarkhighlands.ca

7) Carbine Road

This 9-km trail that begins in the Carbine Road area north of the Village of Pakenham and follows the hydro line behind Mount Pakenham to Glen Creek, returning down Concession.

8) Ottawa Valley Recreational Trail

If you've ever wanted to travel off-road in an award-winning region, the time is now. With stellar scenery and world-class views along its roughly 20-kilometer route, the OVRT offers a level, stone dust surface trail for cycling, walking, horseback riding, all-terrain vehicles and snowmobilers, which makes this year-round trail desirable for users travelling from Sturgess Road, just north of Smiths Falls to Arnprior and beyond. The OVRT connects multiple communities as an ambitious, multi-year project to re-purpose the former Canadian Pacific Railway line as part of a larger 296-kilometer corridor between Smiths Falls and Mattawa. Parking lots are winter maintained.
Parking: 171 Wabie Rd, Pakenham
180 Reserve St, Mississippi Mills (Almonte)
17 Coleman St, Carleton Place
2378 10th Line Beckwith, Carleton Place (Beckwith)
500 Perth Rd, Smiths Falls (Franktown)

9) Baird Trail

Dubbed one of the most beautiful trails in Lanark County, this 2.4 km trail loops 12 loops approximately 1.2 km each through forests featuring giant maple and beech trees coupled with evidence of pioneer farming and red pine plantations. Picnic tables and interpretive signage. Leashed dogs are permitted. 1024 Heron Mills Rd, Lanark Highlands. Parking lot not winter maintained and no winter trail grooming.
CONTACT THE TRAIL: www.lanarkcounty.ca

10) Beckwith Park Nature Trails

Take a walk through Beckwith Park and Pioneer Village to a network of nature trails that meander through Goodwood Marsh, where you'll see abundant wetland species and a variety of birds. The trail starts from behind the arena at and joins the Beckwith Trail. Parking and washrooms are available at the complex. East of Carleton Place off Hwy 15 at 1319 9th Line Beckwith.
CONTACT THE TRAIL: www.dwp.beckwith.on.ca

11) Darou Farm Trail

With approximately 1.3 km of trail configured in two loops to the north and south, you'll love this relaxing stroll through the open fields. A small parking lot on the old farmhouse site and the path has been mowed so the loops are easy to follow. Solid running shoes or hiking boots are recommended, as the surface is uneven in places.
CONTACT THE TRAIL: www.perth.ca

12) Tay Havelock Trail

Popular with ATV users and snowmobilers, this multi-use 23 km stretch of trail (8.3 km within Lanark County) follows an abandoned rail bed. There are multiple access points as it links with other trails for a journey through the scenic countryside. Parking lot is winter maintained.
Parking: 18460 Hwy 7, Perth
453 Armstrong Road
CONTACT THE TRAIL: www.lanarkcounty.ca

13) Coboy Trail

The Coboy Trail is a Nature walk approximately 2.3 km that also can be accessed from the Tay Havelock Trail. The trail is located on the 5th Concession of Bathurst in Tay Valley Township. The trail is typical Canadian Shield with rolling topography. There is a small year-round creek running across the property from West to East. The upland area consists of mixed hardwoods, Field Maple, White Birch, Poplar, Basswood with few Black Cherry and wild Apple trees. The lower areas are dominated by Conifers, namely White Pine, Balsam Fir and White Spruce as well as White Cedar. There is a parking lot on the 2272 5th Concession of Bathurst. Parking lot is winter maintained, there is no winter trail grooming.
CONTACT THE TRAIL: www.lanarkcounty.ca

