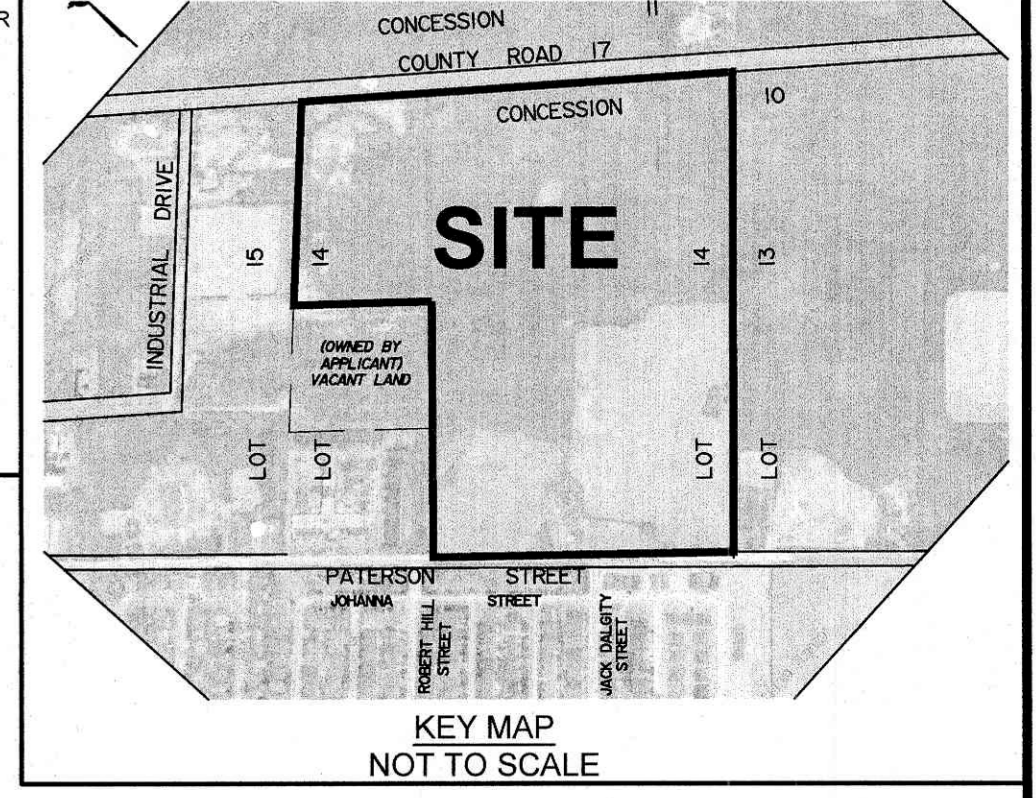


SUBJECT TO THE CONDITIONS, IF ANY, SET FORTH IN OUR LETTER DATED _____

THIS DRAFT PLAN IS APPROVED BY THE COUNTY OF LANARK UNDER SECTION 51 OF THE PLANNING ACT. THIS _____ DAY OF _____ 20__

KURT GREAVES
CHIEF ADMINISTRATIVE OFFICER
COUNTY OF LANARK



DRAFT PLAN OF SUBDIVISION OF PART OF THE EAST HALF LOT 14 CONCESSION 10
Geographic Township of Ramsay
MUNICIPALITY OF MISSISSIPPI MILLS
COUNTY OF LANARK
Prepared by Annis, O'Sullivan, Vollebek Ltd.

Scale 1:1500

Metric
DISTANCES SHOWN ON THIS PLAN ARE IN METRES AND CAN BE CONVERTED TO FEET BY DIVIDING BY 0.3048

SURVEYOR'S CERTIFICATE

I CERTIFY THAT:
The boundaries of the lands to be subdivided and their relationship to adjoining lands have been accurately and correctly shown.

Dec 2/22
Date

[Signature]
Harwick
ONTARIO LAND SURVEYOR

OWNER'S CERTIFICATE

This is to certify that I am the owner / agent of the lands to be subdivided and that this plan was prepared in accordance with my instructions.

Dec 2/22
Date

B Houchaimi
Billy Houchaimi
Houchaimi Holdings Inc.
I have authority to bind the corporation

ADDITIONAL INFORMATION REQUIRED UNDER SECTION 51-17 OF THE PLANNING ACT

(a) see plan
(b) see plan
(c) see plan
(d) see Land use table
(e) see plan
(f) see plan
(g) see plan
(h) municipal water supply
(i) see soils report
(j) see plan
(k) sanitary, storm sewers, municipal water, bell, hydro, cable and gas to be available
(l) subject to easement per Inst. LC36977 see plan

LAND USE TABLE		
LOT \ BLOCK	USE	Square Metres
1 to 179	Residential (Singles)	77 244.7
180 to 220	Residential (Semi)	32 212.2
221 to 247	Residential (Townes)	34 293.9
248	Residential (Stacked)	12 200.4
249 to 251	Walkway	1 804.7
252	Business Park	71 419.8
253	Park	9 213.5
254	Storm Water Lands	19 583.8
255	Pump Station	732.6
256 to 257	Future Roads	75 035.9
258	Road Widening	1 534.9