



SUPPLEMENTARY DOCUMENTATION

Stage 2 Archaeological Assessment:

Perth Golf Course Property
Part Lots 26, 27, Concession 1,
Part Lots 25, 26, Concession 2,
Part of Park Lots 1, 2 and 3 in Lot 27, Concession 2,
Part of the Road Allowance between Concessions 1 and 2,
Geographic Township of Bathurst,
Part Lot 1 in Southeast Half Lot 1, Concession 1,
Compiled Plan No. 8828
Part Lot 1 in the Southwest Half Lot 1, Concession 2,
Compiled Plan No. 8828
Geographic Township of Drummond,
Part of the Road Allowance between Geographic Townships of Bathurst and Drummond, Town
of Perth, Lanark County, Ontario

Prepared For

Hugo Lalonde
Caivan (Perth Gold Course) Limited
2937 Baseline Road
Ottawa, ON
K2H 1B2
Hugo.lalonde@caivan.com

November 2022

Submitted for review November 17, 2022

Stage 2 PIF: P369-0243-2022
Related Stage 1 & 2 PIF: P030-081-2010

Ben Mortimer (License Number P369)

Report: MH1101-REP.01

Matrix Heritage Inc.
6131 Perth St (PO Box 69),
Richmond, Ontario K0A 2Z0
Tel: (613) 807-2071
www.MatrixHeritage.ca

1.0 Datum and Site Coordinates

GPS readings made with a BadElf GPS connected to ArcGIS FieldMap using the NAD 83 datum and UTM zone 18 projection with WAAS, DGPS enabled providing an average of 2 m horizontal and 5.0 m vertical accuracy.

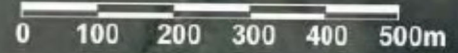
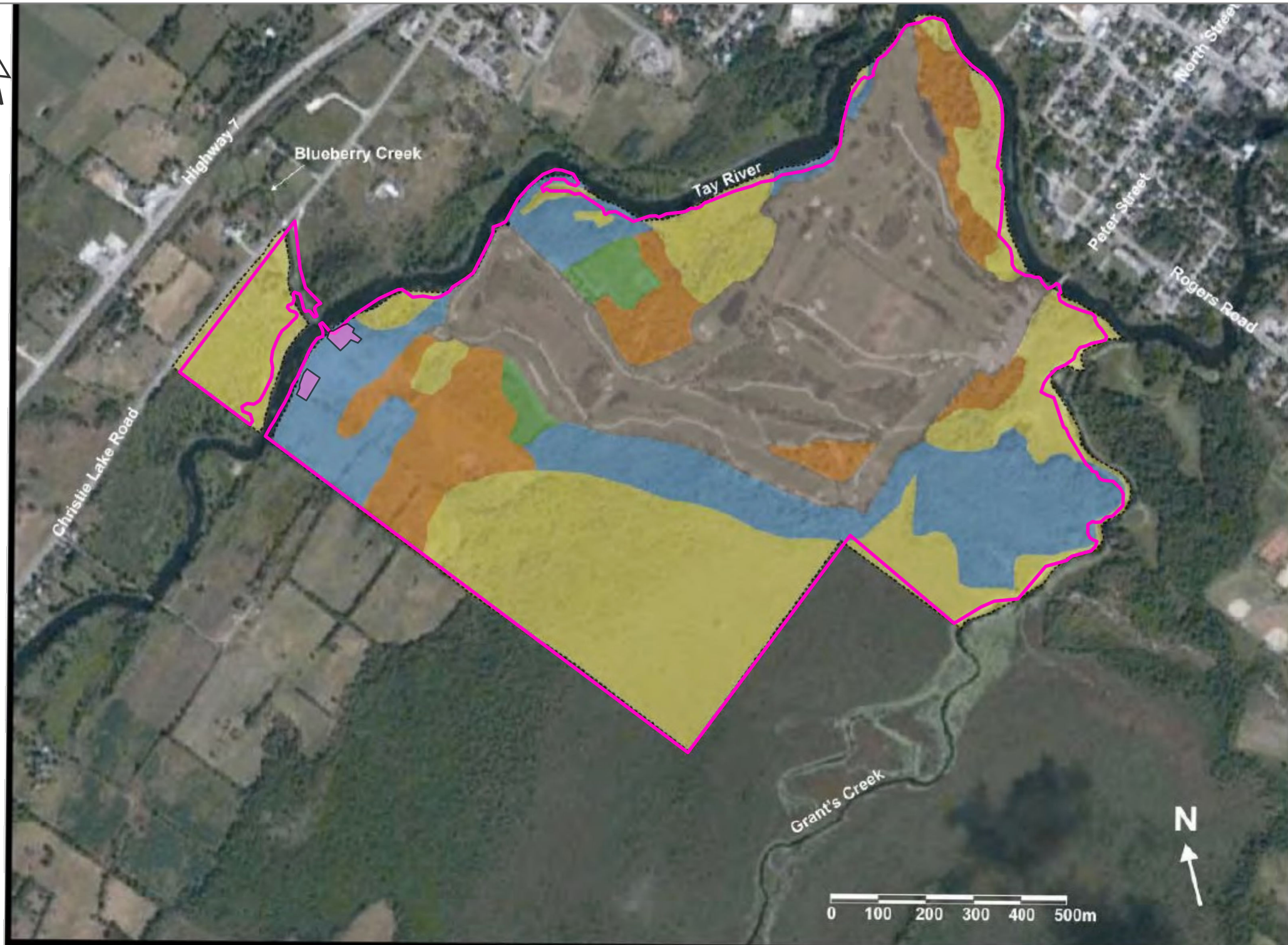
Conditions for GPS survey were clear with no to partial cloud cover on July 7 and September 21, 2022 between 8 am to 4 pm.

Flett Farm (GfGb-12) Site Area Coordinates:

Point	UTM NAD 83 Coordinate
N	18T 399071 4972465
E	18T 399085 4972452
S	18T 399065 4972440
W	18T 399062 4972452
Centre	18T 399071 4972453

Elevation 137 m asl

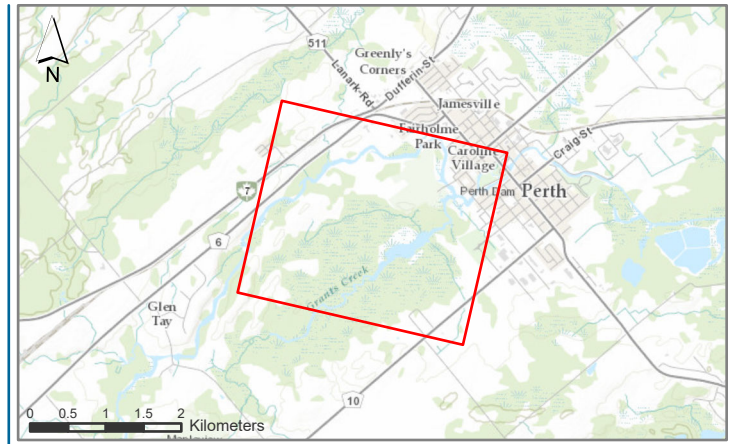
2.0 Maps



- Shovel test-pitted at 5m intervals
- Judgementally shovel test-pitted
- Not tested: existing golf course
- Not tested: disturbed
- Not tested: wetland and low-lying

Stage 1 and 2 Archaeological Assessment Perth Golf Course

Site Plan Showing Testing Methodology

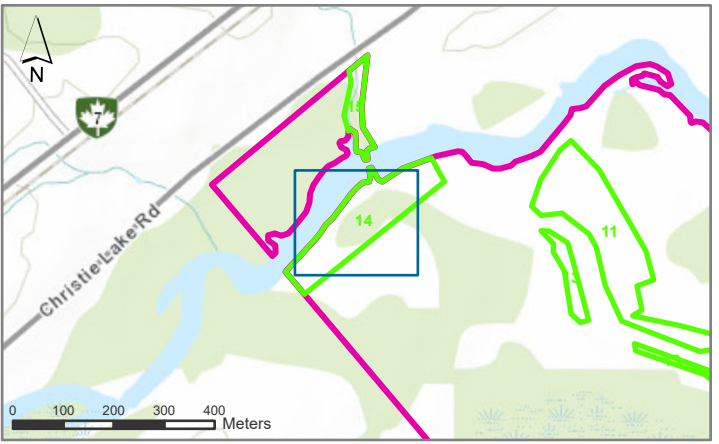
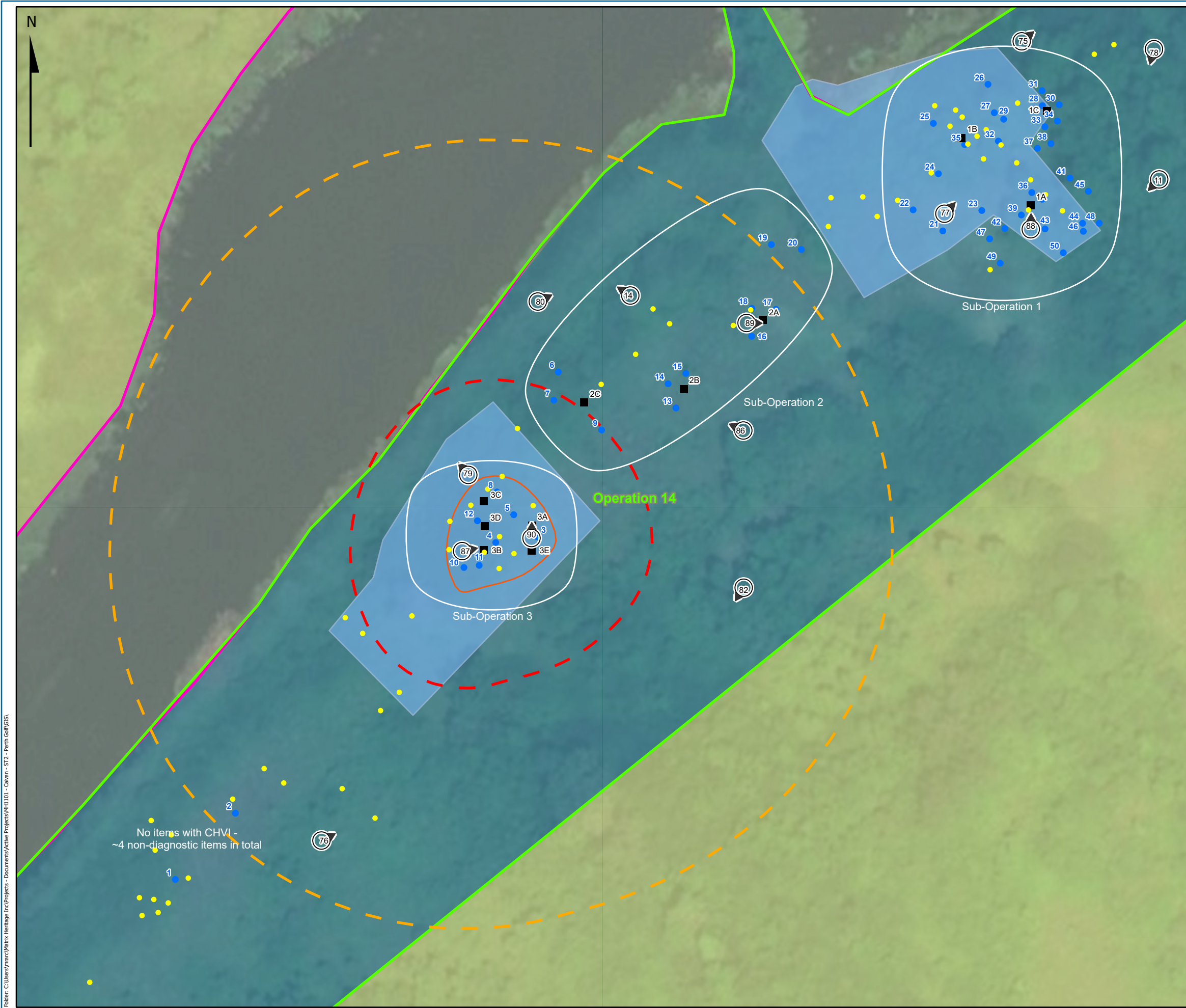


- LEGEND**
- DEVELOPMENT APPLICATION AREA
 - PRAS COMPONENTS RECOMMENDED FOR STAGE 3 (2010)



REFERENCES:
 NEW YORK STATE, UCLG, MAXAR, MICROSOFT, COUNTY OF FRONTENAC, LEEDS AND GRENVILLE, PROVINCE OF ONTARIO, ONTARIO MNR, ESRI CANADA, ESRI, HERE, GARMIN, GEOTECHNOLOGIES, INC., USGS, METI/NASA, NGA, EPA, USDA, AAFC, NRCAN
 MAP OF PREVIOUS ASSESSMENT METHODS FROM PAST RECOVERY 2011

FILE MH1101	DATE 2022-11-04
PROJECTION: NAD 1983 UTM Zone 18N	CREATED BY: BM
	CHECKED BY: NK
PROJECT STAGE 2 ARCHAEOLOGICAL ASSESSMENT PERTH GOLF COURSE, PERTH, ONTARIO	
TITLE PREVIOUS ASSESSMENT	MAP SD 1



LEGEND

- DEVELOPMENT APPLICATION AREA
- MATRIX HERITAGE STAGE 2 OPERATIONS
- PRAS STAGE 2 POSITIVE TEST PIT (2011)

MATRIX HERITAGE STAGE 2 ADDITIONAL TESTING METHODS

- SHOVEL TEST (5 M INTERVAL)

EXCLUDED

- PREVIOUSLY ASSESSED IN 2011 AND ACCEPTABLE TO MTCS

MATRIX HERITAGE STAGE 2 FINDS (2022)

- POSITIVE STAGE 2 TEST PIT
- STAGE 2 1X1 M UNIT
- REVISED AREA RECOMMENDED FOR STAGE 3 ASSESSMENT

PARTIAL CLEARANCE PROTECTIVE BUFFERS

- 20 M PROTECTIVE NO-GO ZONE
- 70 M MONITORING ZONE
- ⦿ PHOTO LOCATION, DIRECTION, AND FIGURE NUMBER

STAGE 3 2011 TESTING

- PRAS COMPONENTS RECOMMENDED FOR STAGE 3 (2011)

0 10 20 30 40 Meters



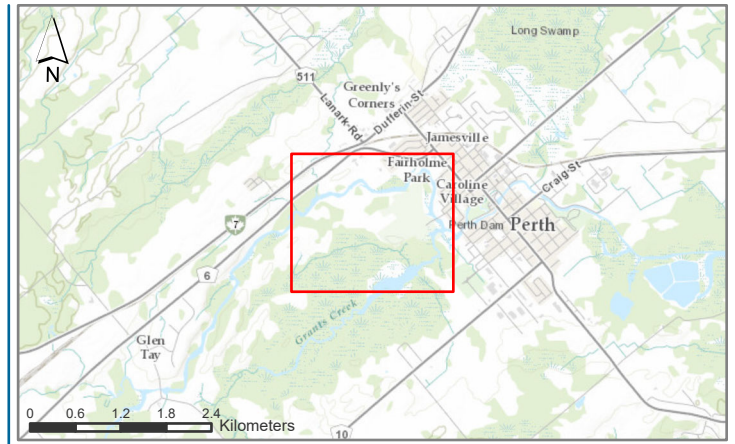
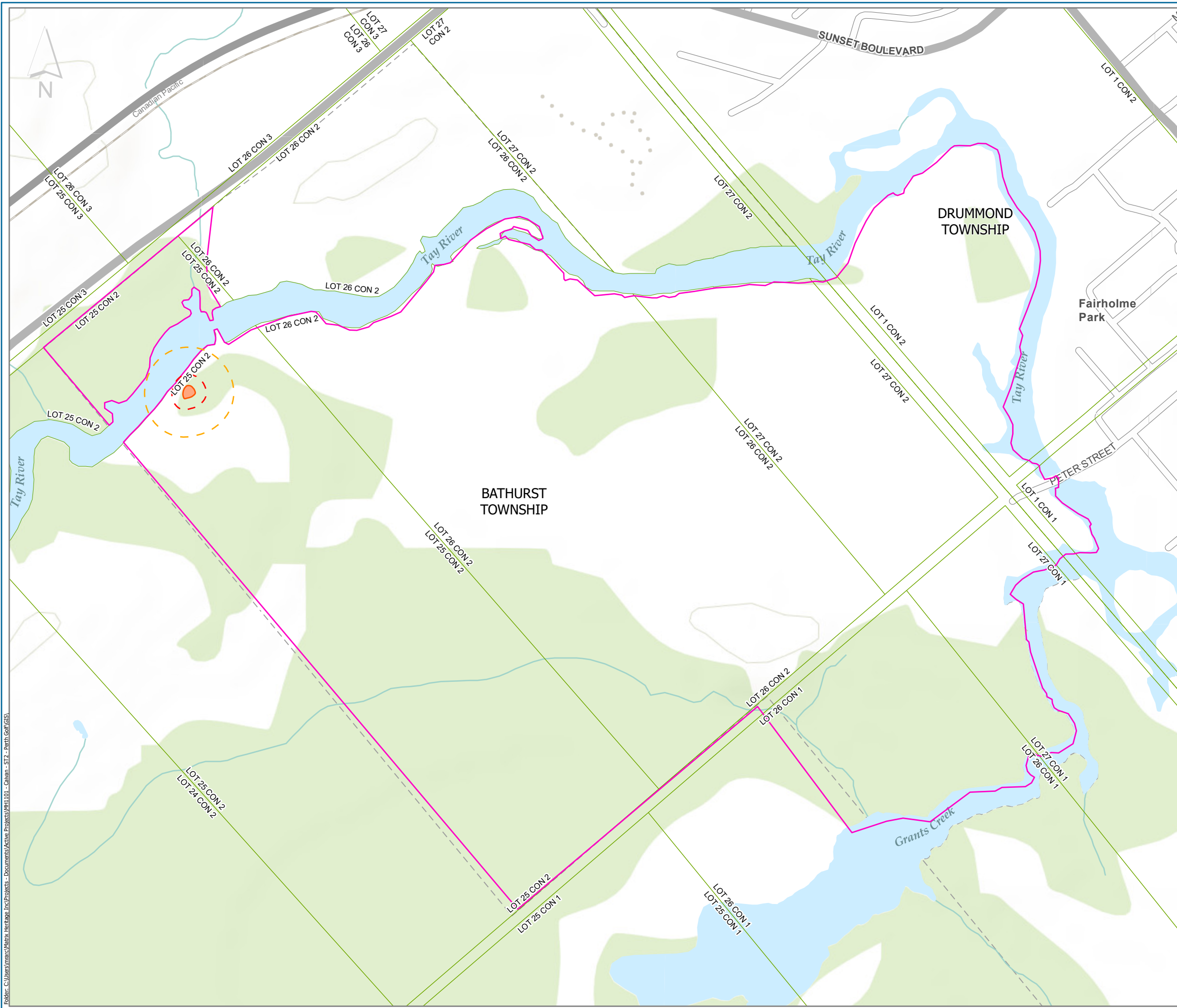
REFERENCES:
 NEW YORK STATE, MAXAR, MICROSOFT, COUNTY OF FRONTENAC, LEEDS AND GRENVILLE, PROVINCE OF ONTARIO, ONTARIO MNR, ESRI CANADA, ESRI, HERE, GARMIN, GEOTECHNOLOGIES, INC., USGS, METI/NASA, EPA, USDA, AAFC, NRCAN

FILE **MH1101** DATE **2022-11-14**
 CREATED BY: BM
 CHECKED BY: NK

PROJECT
STAGE 2 ARCHAEOLOGICAL ASSESSMENT
PERTH GOLF COURSE, PERTH, ONTARIO

TITLE **OPERATION 14 DETAIL** MAP **SD 2**

Folder: C:\Users\marc\Matrix Heritage Inc\Projects\Active Projects\MH1101 - Caven - ST2 - Perth Golf\GIS




LEGEND

- DEVELOPMENT AREA
- FLETT FARM SITE (BFGB-12)

PARTIAL CLEARANCE PROTECTIVE BUFFERS

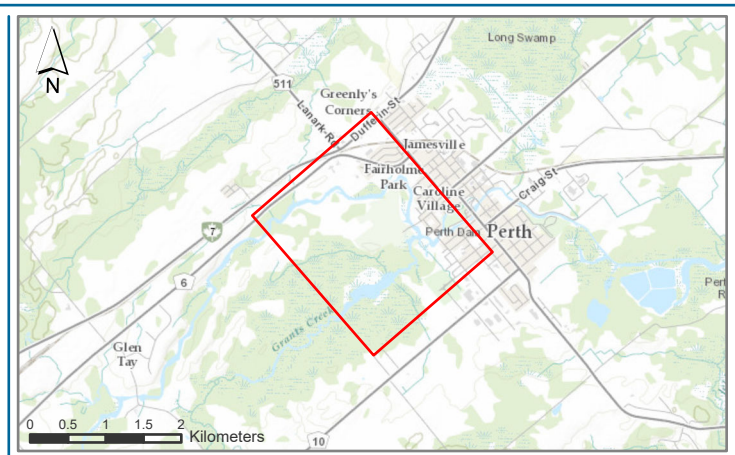
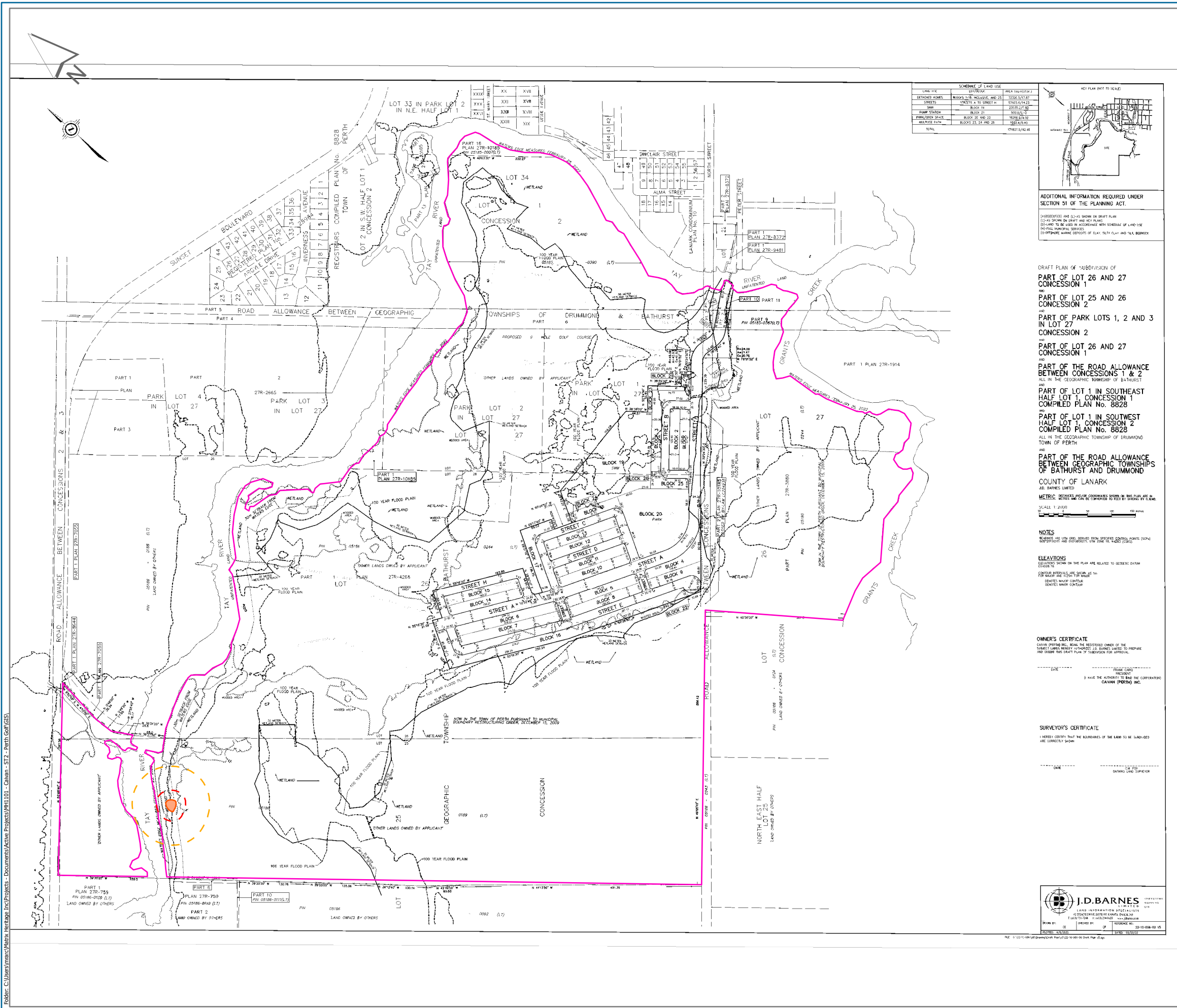
- 20 M PROTECTIVE NO-GO ZONE
- 70 M MONITORING ZONE




REFERENCES:
 ESRI, NASA, NGA, USGS, FEMA, COUNTY OF FRONTENAC, LEEDS AND GRENVILLE, PROVINCE OF ONTARIO, ONTARIO MNR, ESRI CANADA, ESRI, HERE, GARMIN, GEOTECHNOLOGIES, INC., USGS, METI/NASA, NGA, EPA, USDA, AAFC, NRCAN, ESRI COMMUNITY MAPS CONTRIBUTORS, PROVINCE OF ONTARIO, © OPENSTREETMAP, MICROSOFT, ESRI CANADA, ESRI, HERE, GARMIN, SAFEGRAPH, GEOTECHNOLOGIES, INC, METI/NASA, USGS, EPA, NPS, US CENSUS BUREAU, USDA, NRCAN, PARKS CANADA

FILE MH1101	DATE 2022-11-14
PROJECTION: NAD 1983 UTM Zone 18N	CREATED BY: BM
PROJECT	CHECKED BY: NK
STAGE 2 ARCHAEOLOGICAL ASSESSMENT PERTH GOLF COURSE, PERTH, ONTARIO	
TITLE	MAP
LOCATION	SD 3

Folder: C:\Users\matrix\Matrix_Heritage_Inc\Projects\Active\Projects\MH1101 - Coven - ST2 - Perth Golf GS1



- LEGEND**
- DEVELOPMENT AREA
 - FLETT FARM SITE (BFGB-12)
 - 20 M PROTECTIVE NO-GO ZONE
 - 70 M MONITORING ZONE



DRAFT PLAN OF SUBDIVISION OF
PART OF LOT 26 AND 27 CONCESSION 1
 AND
PART OF LOT 25 AND 26 CONCESSION 2
 AND
PART OF PARK LOTS 1, 2 AND 3 IN LOT 27 CONCESSION 2
 AND
PART OF LOT 26 AND 27 CONCESSION 1
 ALL IN THE GEOGRAPHIC TOWNSHIP OF BATHURST
 AND
PART OF LOT 1 IN SOUTHEAST HALF LOT 1, CONCESSION 1 COMPILED PLAN No. 8828
 AND
PART OF LOT 1 IN SOUTHWEST HALF LOT 1, CONCESSION 2 COMPILED PLAN No. 8828
 ALL IN THE GEOGRAPHIC TOWNSHIP OF DRUMMOND TOWN OF PERTH
 AND
PART OF THE ROAD ALLOWANCE BETWEEN GEOGRAPHIC TOWNSHIPS OF BATHURST AND DRUMMOND COUNTY OF LANARK AS SHOWN LIMITED

METRIC DISTANCES AND DIMENSIONS SHOWN ON THIS PLAN ARE IN METERS AND CAN BE CONVERTED TO FEET BY DIVIDING BY 0.3048
 SCALE: 1:2000

NOTES
 REFER TO THE SURVEY REPORT FOR SPECIFIC CONTROL POINTS (CP) REPORTED AND IDENTIFIED ON THESE LOTS (CP#)

ELEVATIONS
 ELEVATIONS SHOWN ON THIS PLAN ARE RELATED TO GEODETIC DATUM (GDA83) UNLESS OTHERWISE NOTED AS BEING RELATED TO MEAN SEA LEVEL (MSL) OR OTHER DATUM AS NOTED.

OWNER'S CERTIFICATE
 I, THE REGISTERED OWNER OF THE SUBJECT LAND, HEREBY CERTIFY THAT I HAVE READ AND UNDERSTAND THE DRAFT PLAN OF SUBDIVISION FOR APPROVAL.

SURVEYOR'S CERTIFICATE
 I HEREBY CERTIFY THAT THE BOUNDARIES OF THE LAND TO BE SUBDIVIDED ARE CORRECTLY SHOWN.



REFERENCES:
 COUNTY OF FRONTENAC, LEEDS AND GRENVILLE, PROVINCE OF ONTARIO, ONTARIO MNR, ESRI CANADA, ESRI, HERE, GARMIN, GEOTECHNOLOGIES, INC., USGS, METI/NASA, NGA, EPA, USDA, AAFC, NRCAN
 PLAN DATED APRIL 6 2022 PROVIDED BY THE PROPONENT

FILE MH1101 DATE 2022-11-14

PROJECTION: NAD 1983 UTM Zone 18N CREATED BY: BM

PROJECT STAGE 2 ARCHAEOLOGICAL ASSESSMENT PERTH GOLF COURSE, PERTH, ONTARIO CHECKED BY: NK

TITLE PLAN OF SURVEY MAP SD 4

Folder: C:\Users\matrix\Matrix\Heritage\Projects - Documents\Active Projects\MH1101 - Cavan - ST2 - Perth Golf (GIS)

3.0 Ministry Correspondence

From: [Horne, Malcolm \(MTCS\)](#)
To: [Ben Mortimer](#)
Cc: [Archaeology \(MTCS\)](#)
Subject: Further Advice re Stage 3 Assessment of Flett Farm Sites, Perth Golf Course, Town of Perth, MHSTCI File 0005316 - P369-0243-2022 and P369-0217-2022
Date: September 13, 2022 1:08:40 PM
Attachments: [image001.png](#)
[image003.png](#)
[image004.png](#)
[image005.png](#)
[image007.png](#)
[image008.png](#)
[image009.png](#)

Hi, Ben. Apologies for the delayed response. The test units should be placed at locations where the highest density of the earliest artifacts have been recovered. If at least three test units at those locations demonstrate clearly later dating and/or disturbed characteristics, then a recommendation of no further CHVI can be made. We do not advise excavating more than five test units within one locus during Stage 2 unless the ministry has agreed. If it cannot be clearly demonstrated that a given locus is later dating and/or disturbed such that a recommendation of no further CHVI can be made, and it has become necessary to excavate more than five test units, we advise taking out a Stage 3 PIF and continuing the grid on a 10 metre interval. However, please do not continue test unit excavation beyond the point at which it is clear that the locus is of no further CHVI. We would be pleased to advise on the results at any point. If we agree that the results demonstrate no further CHVI, no further test units need to be completed.

Please include a PDF copy of this advice as supplementary documentation to your project report package.

As a standard part of all advice provided to licensees, please note that this advice has been provided by this ministry under the assumption that the information submitted by the licensed archaeologist is complete and accurate. The advice provided applies only to the project in question and is not to be used as a precedent for future projects. Further measures may need to be taken in the event that additional artifacts or archaeological sites are identified or if the information provided by the licensed archaeologist is otherwise found to be inaccurate, incomplete, misleading, or fraudulent.

Sincerely,

Malcolm Horne
Archaeology Review Officer
Archaeology Program Unit
Ministry of Tourism, Culture and Sport
Mobile: 437-339-8861
Email: Malcolm.Horne@ontario.ca

From: Ben Mortimer <bmortimer@matrixheritage.ca>
Sent: August 22, 2022 8:04 AM
To: Williams, Andrea (MTCS) <Andrea.Williams@ontario.ca>
Cc: Horne, Malcolm (MTCS) <Malcolm.Horne@ontario.ca>; Archaeology (MTCS) <archaeology@ontario.ca>
Subject: RE: Advice re Stage 3 Assessment of Flett Farm Sites, Perth Golf Course, Town of Perth,

CAUTION -- EXTERNAL E-MAIL - Do not click links or open attachments unless you recognize the sender.

Morning,

Hope you had a great weekend!

Looking to get confirmation on the one semi-outstanding question:

“To what level of effort would we need to complete Stage 2 test units to document the mixed contexts, a couple to ascertain deposits or would we end up doing a Stage 3 level of effort to be able to clear the site anyway and therefore simply moving to a Stage 3 process under the RHF (Section 3.2.2), on the 10 m interval and concentrating in would likely be more prudent?”

-I will check in to get an opinion from Malcolm when he’s back. I think the answer to this is going to depend on how clearly the Stage 2 units confirm mixed contexts (the pilot document Section 2.1.3 Standard 2 directs that the number and placement demonstrate site stratigraphy and integrity but no specific parameters or numbers are stated). It will also depend on whether any features are identified (Section 2.1.3, Standards 5 and 7 of the pilot document). Can I get back to you on that one?

Cheers,
Ben

From: Williams, Andrea (MTCS) <Andrea.Williams@ontario.ca>

Sent: August 4, 2022 4:16 PM

To: Ben Mortimer <bmortimer@matrixheritage.ca>

Cc: Horne, Malcolm (MTCS) <Malcolm.Horne@ontario.ca>; Archaeology (MTCS) <archaeology@ontario.ca>

Subject: RE: Advice re Stage 3 Assessment of Flett Farm Sites, Perth Golf Course, Town of Perth, MHSTCI File 0005316 - P369-0243-2022 and P369-0217-2022

Hi Ben,

Apologies for the delay in getting you a reply. I am backing up Malcolm for a couple of weeks.

I have pulled your three questions out:

“Would the previous recommendations for Stage 3 assessment set a precedent requiring a higher level of assessment, therefore a Stage 3 recommendation is ultimately a likely recommendation regardless of the Stage 2 results”

-No, there’s no concern about precedent: it is acceptable for the current licensee to recommend a different level of assessment using their professional judgment, based on a new interpretation and/or additional information. There’s a standard that allows for this possibility: S&Gs 7.5.8 Standard 5b: "documentation of any differences in the current work from the previously recommended work". Understood that you are following up a Stage 2 recommending Stage 3 with another Stage 2

instead.

“To what level of effort would we need to complete Stage 2 test units to document the mixed contexts, a couple to ascertain deposits or would we end up doing a Stage 3 level of effort to be able to clear the site anyway and therefore simply moving to a Stage 3 process under the RHF (Section 3.2.2), on the 10 m interval and concentrating in would likely be more prudent?”

-I will check in to get an opinion from Malcolm when he’s back. I think the answer to this is going to depend on how clearly the Stage 2 units confirm mixed contexts (the pilot document Section 2.1.3 Standard 2 directs that the number and placement demonstrate site stratigraphy and integrity but no specific parameters or numbers are stated). It will also depend on whether any features are identified (Section 2.1.3, Standards 5 and 7 of the pilot document). Can I get back to you on that one?

“Additionally, in any scenario, would testing of the intervening area between the concentrations be required, e.g., a test unit or two added to confirm context in this area? From that intervening area only a few cut nail fragments, ~10 pieces of pane glass, and a few wire nails were recovered.

-As you said, I do suggest a unit or two to confirm context, which may serve to back up your interpretation of two mixed concentrations separated by a diffuse scatter of plough-dragged artifacts.

Thank you for your patience while I work through a high volume of inquiries. I will discuss your second question with Malcolm next week and get back to you. Thanks.

-Andrea

Andrea Williams

Archaeology Review Officer + Marine Archaeology Licensing and Information

Archaeology Program Unit

Ministry of Tourism, Culture and Sport

Cell phone: 437-339-9197

Andrea.Williams@ontario.ca



This advice has been provided by the Ministry under the assumption that the information submitted by the licensed archaeologist is complete and accurate. The advice provided applies only to the project in question and is not to be used as a precedent for future projects.

Further measures may need to be taken in the event that additional artifacts or archaeological sites are identified or if the information provided by the licensed archaeologist is otherwise

found to be inaccurate, incomplete, misleading, or fraudulent.

Please include a PDF copy of this advice as supplementary documentation to your project report package.

From: Horne, Malcolm (MTCS) <Malcolm.Horne@ontario.ca>
Sent: July 22, 2022 4:52 PM
To: Williams, Andrea (MTCS) <Andrea.Williams@ontario.ca>
Cc: Archaeology (MTCS) <archaeology@ontario.ca>
Subject: FW: Advice re Stage 3 Assessment of Flett Farm Sites, Perth Golf Course, Town of Perth, MHSTCI File 0005316 - P369-0243-2022 and P369-0217-2022

From: Ben Mortimer <bmortimer@matrixheritage.ca>
Sent: July 13, 2022 10:03 AM
To: Horne, Malcolm (MTCS) <Malcolm.Horne@ontario.ca>
Cc: Archaeology (MTCS) <archaeology@ontario.ca>
Subject: RE: Advice re Stage 3 Assessment of Flett Farm Sites, Perth Golf Course, Town of Perth, MHSTCI File 0005316 - P369-0243-2022 and P369-0217-2022

CAUTION -- EXTERNAL E-MAIL - Do not click links or open attachments unless you recognize the sender.

Hi Malcolm,

As per your comments, which I fully agreed with by the way, we completed further Stage 2 work for the development area under P369-0243-2022. This included:

1. Assessing areas of the golf course (which may have retained potential),
2. Revising areas near the water (to confirm permanently wet/complete testing), and
3. Undertaking more Stage 2 test pitting in the area previously identified as the Flett Farm site (preliminary Stage 2 mapping attached).

I'm writing to get your input on/discuss the next steps at the Flett Farm Site, i.e., Stage 2 test units under the RHF vs Stage 3 RHF.

While our analysis is not finalized, testing throughout the large scatter area that was identified as the Flett Farm produced an assemblage largely documenting the occupancy of the area from the late 19th century into the 20th. Of the diagnostic materials recovered, a large portion is modern or late 19th century (wire nails, manganese glass, machine made glass, plastics) with very limited diagnostic historical material mixed in. The assemblage, to put it bluntly, is crappy. There is nothing indicating a pre-1830 occupancy and very little to show for any pre-1870 occupancy. This is relatively consistent across the entire area. As Past Recovery found in the previous Stage 2, artifacts are concentrated to either end of the large scatter, but most (almost all) test pits contain post 1900 material. The southern concentration tends to contain less historical material (fewer artifacts overall), and while the northern concentration does have a mid to late 19th century historical component, every

context from our Stage 2 work includes artifacts attesting to the ongoing occupancy well into the 20th century. The intervening scatter of again mostly modern material between the concentrations is sparse and is likely the result of plow scatter from years of agriculture and should not be of further concern. While the ends of the scatter may have moderately more CHVI, that is very debateable and is likely low.

Our results are supported in large part by the Past Recovery's previous finds and their historical research (we are doing a brief reanalysis of their testing results as part of our process by mapping historic and modern artifact concentrations). While they note the occupancy may have started in the mid-1800s, the artifacts and research documented in their report (including topographic maps and aerials photography) shows an occupancy carrying into the mid-1900s. The nagging issue is if there are potentially deposits retaining 19th century context within the end concentrations, which is I believe was the reason Past Recovery recommended Stage 3.

However, given the additional Stage 2 assemblage and further documentation of mixed contexts, our preference is to approach the site under the draft RHF S&Gs, as I believe the site fits the criteria for a pilot of the new approach very well. The evidence thus far shows that the occupancy into the 1900s caused the loss of *any* secure 19th century context. Based on the mixed artifacts found across the concentrations at either end of the scatter, the documented ongoing occupancy into the 20th century, and the lack of concentrations of bonafide mid-19th century diagnostics, the potential of encountering a secure historical context is very low. Given that, I'm wondering if a few strategically placed 1x1 units under the RHF process (RHF Section 2.1.3) could potentially be sufficient to clear the site if mixed contexts are stratigraphically documented in the concentrations? Units would be placed where historical artifacts are most prevalent to determine if there are secure 19th century contexts present.

My concern with proceeding in such a manner is twofold:

1. Would the previous recommendations for Stage 3 assessment set a precedent requiring a higher level of assessment, therefore a Stage 3 recommendation is ultimately a likely recommendation regardless of the Stage 2 results, and
2. To what level of effort would we need to complete Stage 2 test units to document the mixed contexts, a couple to ascertain deposits or would we end up doing a Stage 3 level of effort to be able to clear the site anyway and therefore simply moving to a Stage 3 process under the RHF (Section 3.2.2), on the 10 m interval and concentrating in would likely be more prudent?

Additionally, in any scenario, would testing of the intervening area between the concentrations be required, e.g., a test unit or two added to confirm context in this area? From that intervening area only a few cut nail fragments, ~10 pieces of pane glass, and a few wire nails were recovered.

Your review and comments are much appreciated!

Best Regards,
Ben



Ben Mortimer

Principal, Matrix Heritage

Phone 613-807-2071

Mobile 613-614-6002

Web <http://www.matrixheritage.ca>

Email bmortimer@matrixheritage.ca

Office 6131 Perth St, Richmond, Ontario, K0A 2Z0

Mailing PO Box 69, Richmond, Ontario, K0A 2Z0

Preserving the past by planning and building for the future.

From: Horne, Malcolm (MHSTCI) <Malcolm.Horne@ontario.ca>
Sent: May 6, 2022 2:37 PM
To: Ben Mortimer <bmortimer@matrixheritage.ca>
Cc: Archaeology (MHSTCI) <archaeology@ontario.ca>
Subject: Advice re Stage 3 Assessment of Flett Farm Sites, Perth Golf Course, Town of Perth, MHSTCI File 0005316

Hi, Ben. Please find the following comments:

- What is the current development application? Does it include all parts of the area that was assessed in 2010?
- Will the golf course be redeveloped? The Stage 1-2 assessment of the golf course does not appear to meet the 2011 Standards and Guidelines. While it may vary, golf courses often are not completely disturbed and have much more potential than was documented by the 2010 Stage 1-2 report. We are not concerned if the golf course will not be redeveloped or is not part of the current development application. If the golf course is to be redeveloped, we have concerns for further assessment.
- There are areas of forest along the river for which it is not clear that they are wet and lacking potential, notably in 'Operation 5'. If this is part of the current development application, we have concerns for further assessment.
- There is an area of positive test pits extending approximately 300 metres, 30 to 40 metres wide, paralleling the Tay River in historical Lot 25. This was defined into three clusters for which Stage 3 assessment was recommended for parts of two of those clusters (Sites 1 and 3). We are unable to support these recommendations because they are not specific enough. There is internal disagreement within the recommendations as to which clusters require further work and the discussion elsewhere is difficult to follow. The recommendations furthermore do not clearly provide a basis for defining the areas for Stage 3 assessment versus those areas which are of no further concern. It appears that the positive yielding test pits comprise a relatively continuous scatter resulting from a serial occupation by one family. As such, we advise developing a strategy to address the full extent of the artifact distribution with the objective of obtaining a complete picture of the historical occupation of this location

by a single family. As opposed to excavating test units on the basis of the current information, we suggest carrying out a second round of test pitting in order to obtain a larger artifact sample and provide further support for focusing the Stage 3 test unit excavation. Additional historical research may also be useful. On the basis of this information, please then provide mapping and a detailed layout of the location and extent of the proposed Stage 3 test unit excavation.

Please include a PDF copy of this advice as supplementary documentation to your project report package.

As a standard part of all advice provided to licensees, please note that this advice has been provided by this ministry under the assumption that the information submitted by the licensed archaeologist is complete and accurate. The advice provided applies only to the project in question and is not to be used as a precedent for future projects. Further measures may need to be taken in the event that additional artifacts or archaeological sites are identified or if the information provided by the licensed archaeologist is otherwise found to be inaccurate, incomplete, misleading, or fraudulent.

Sincerely,

Malcolm Horne
Archaeology Review Officer
Archaeology Program Unit
Ministry of Heritage, Sport, Tourism and Culture Industries
Mobile: 437-339-8861
Email: Malcolm.Horne@ontario.ca

From: Ben Mortimer <bmortimer@matrixheritage.ca>
Sent: Tuesday, May 3, 2022 8:52 AM
To: Archaeology (MHSTCI) <archaeology@ontario.ca>
Subject: Request for Advice

CAUTION -- EXTERNAL E-MAIL - Do not click links or open attachments unless you recognize the sender.

Good morning,

We have been retained to undertake a Stage 3 assessment of the Flett Farm site in Perth, recommended under PIF P030-081-2010 by Past Recovery and are looking to confirm our general approach prior to proceeding. The Stage 1 and 2 assessment (2010) recommends Stage 3 archaeological assessment relating to historical finds along the river frontage of the property. These finds represent two nodes of the remnants of the Flett farm and are believed to span from the mid-19th century into the 20th century. In summary, the northern node was found to incorporate a significant quantity of material from later occupants (well into the 20th century) while the southern was more aligned with a mid-19th century occupancy (still with some post 1900 artifacts, but less than the other node). The recommendations from the Stage 1-2 report are as follows:

- 1) *A Stage 3 archaeological assessment by a licenced archaeologist is required around two clusters of positive test pits found near the Tay River on the Lot 25, Concession*

2, geographic Township of Bathurst part of the property (comprising parts of Sites 1 and 3 in Operation 3) prior to any development in this area (see Figure 130). [Figure included below]

2) No further archaeological assessment of the remainder of the property as presently defined is required and clearance of any archaeological conditions placed on this part of the study area should be granted.

3) Should archaeological remains be found on the property during any construction activities, the Ministry of Tourism and Culture (416 314-7148) should be notified immediately.

4) In the event that human remains are encountered during construction activities, both the Ministry of Tourism and Culture (416 314-7148) and the Registrar or Deputy Registrar of the Cemeteries Regulation Unit of the Ministry of Consumer and Commercial Relations (416 326-8392) should be notified immediately.

As these pre-2011 S&Gs recommendations are relatively open in terms of methodology, I want to ensure our approach is acceptable prior to beginning the assessment. The Stage 1 and 2 assessment was completed prior to the 2011 Standards and Guidelines and the 2014 bulletin The Archaeology of Rural Historical Farmsteads which provide alternative approaches for historical farmstead sites. We have reviewed the Stage 1-2 report and it is clear the site nodes do relate to a 19th homestead and appear to incorporate materials suggesting occupancy from the mid-1800s well into the 20th century within at least the one node. We plan to proceed with commencing excavations within the two nodes recommended for Stage 3 (as shown in the attached figure from the Stage 1-2 report) on a 10 m grid and then infilling on the 5 m grid as required unit it can be adequately determined if there is CHVI warranting Stage 4 mitigation of development impact. An appropriate % of the on-grid total would then be infilled off the 5 and 10 m grind as well. This is an approach we have used in similar situations and has worked well in refining our understanding of other mid-19th to early 20th century homesteads.

Best Regards,
Ben



Ben Mortimer

Principal, Matrix Heritage

Phone 613-807-2071

Mobile 613-614-6002

Web <http://www.matrixheritage.ca>

Email bmortimer@matrixheritage.ca

73 Moore Street, Richmond Ontario, KOA 2Z0



Preserving the past by planning and building for the future.

4.0 Proponent Support of Partial Clearance

Citizenship and Multiculturalism
Citizenship, Inclusion and Heritage Division
Heritage Branch, Archaeology Program Unit
5th Floor, 400 University Ave
Toronto, ON, M7A 2R9

Re: Stage 2 Archaeological Assessment: Perth Golf Course Property Part Lots 26, 27, Concession 1; Part Lots 25, 26, and Part of Park Lots 1,2 and 3 in Lot 27, Concession 2, and Part of Road Allowance between Concessions 1 and 2, Geographic Township of Bathurst, and Part Lot 1, Concession 1, and Part Lot 1, Concession 2, Geographic Township of Drummond, and Part of Road Allowance between Geographic Townships of Bathurst and Drummond, Town of Perth, Lanark County, Ontario

Prior to ground disturbing activity, as the proponent of the proposed development, Caivan is committed to implementing an avoidance strategy developed in consultation with a licensed consultant archaeologist, (i.e., a no-go zone). This strategy will protect the archaeological sites noted in the report Stage 2 Archaeological Assessment: Perth Golf Course Property until such time as all archaeological concerns have been addressed or subsequent overriding recommendations (i.e., Stage 4) are implemented.

Any ground alterations will avoid the noted archaeological sites with outstanding concern and their protective buffers. Additionally, prior to construction activity that extends to the edge of the monitoring zone, a temporary barrier will be erected around the 20 m protective buffer, as outlined in the report, to ensure the safe keeping of the archaeological sites.

Prior to construction activity in the 50 m buffer zone within the development application area, as outlined in the report, the proponent will notify a licensed consultant archaeologist regarding the proposed start date for such activities. All construction activity within the 50 m buffer zone area will be monitored at all times by a licensed consultant archaeologist. The licensed consultant archaeologist is hereby empowered to stop construction if there is concern of impact to the noted archaeological site.

Caivan is also committed to completing the remaining archaeological investigation on the archaeological site identified in the report prior to construction activity or other ground disturbing activity (aside from normal agricultural work or the routine maintenance of property, as per the Ontario Heritage Act (1990), Part IV, 48) within that parcel before August 2023.

Colin Haskin

Colin Haskin, Colin.Haskin@caivan.com
Project Manager, Land Development

CAIVAN
COMMUNITIES